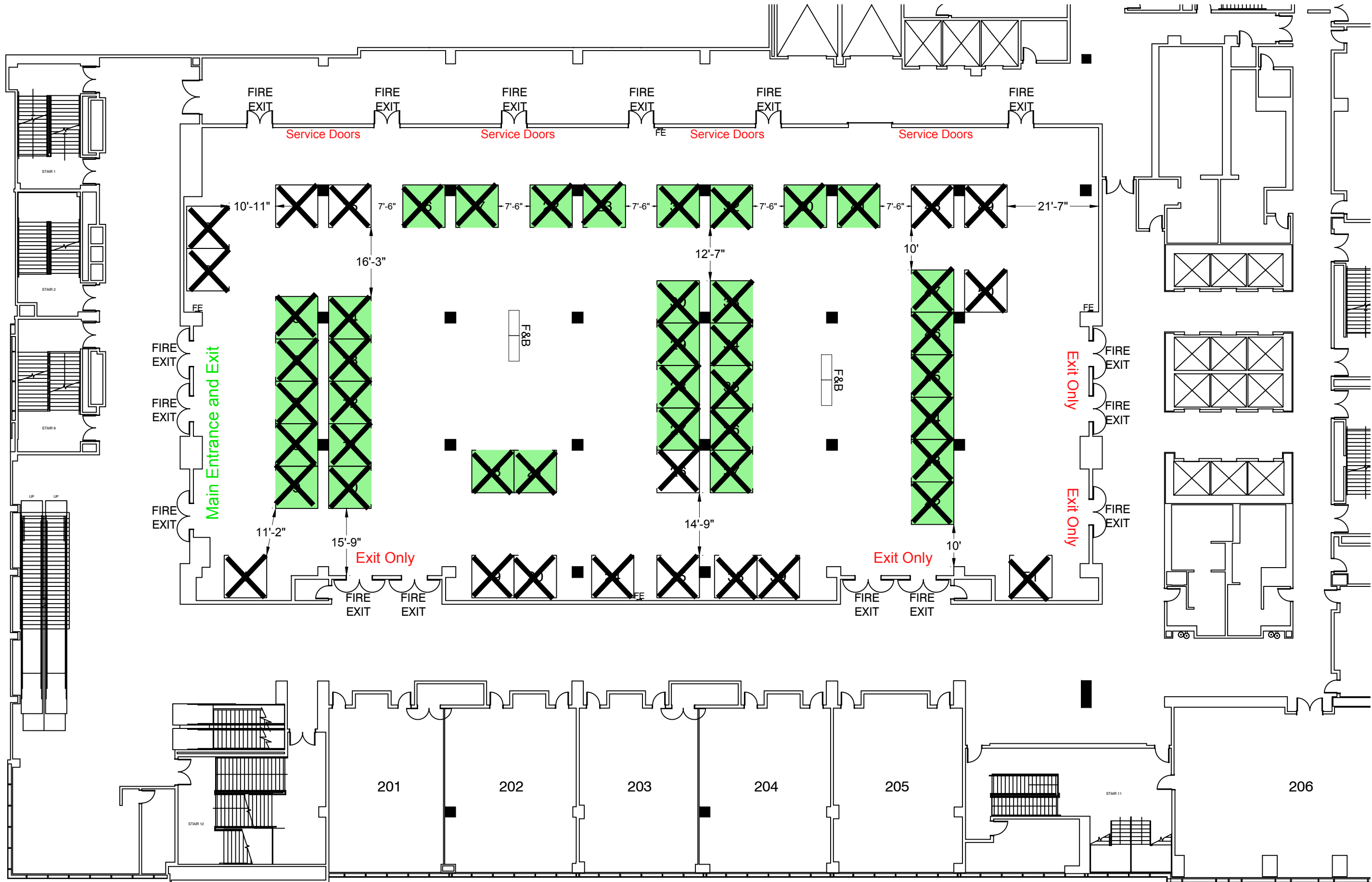


AMERICAN ASSOCIATION OF EXPORTERS & IMPORTERS

JUNE 20-22, 2017

J.W. MARRIOTT HOTEL - GRIFFIN HALL / 2ND LEVEL - 110 E. 2ND ST. AUSTIN, TX



REVISION
 Date: 1/6/2017
 By: DAVID DELGADO

BOOTH COUNT

Inventory as of 01/06/2017

| Dimension | Size | Qty | SqFt |
|-----------|------|-----|-------|
| 10x10' | 100 | 51 | 5,100 |
| Totals: | | 51 | 5,100 |

Premium Booths

BLDG. LEGEND:

- Column (2'6"x2'6")

JW Marriott Hotel
 110 E. 2nd St
 Austin, Texas 78701

DRAWING INFO

Passport Line Item Number:
3222672

Facility:
 J.W. MARRIOTT HOTEL

Hall / Level:
 GRIFFIN HALL / 2ND LEVEL

City & State:
 110 E. 2ND ST. AUSTIN, TX

Scale: CUSTOM

Job #: 447698

AE: MATT SEGOVIA
 Prod. AE: MATT SEGOVIA
 Started: 1/6/2017
 Started By: FRED DE LEON
 Prod. Branch: SAN ANTONIO, TX

FREEMAN

Disclaimer - Every effort has been made to ensure the accuracy of all information contained on this floor plan. However, no warranties, either expressed or implied, are made with respect to this floor plan. If the location of building columns, utilities or other architectural components of the facility is a consideration in the construction or usage of an exhibit, it is the sole responsibility of the exhibitor to physically inspect the facility to verify all dimension and locations.
 © Copyright 2007, Freeman Co. All rights reserved.

Confidential and Proprietary - the information contained herein is the proprietary information of Freeman and by accessing the information, the recipient agrees to keep the information confidential and not disclose it to any third party without the prior consent of Freeman. Recipient also agrees to only use the information for its internal evaluation purposes and for no other purpose, without the prior consent of Freeman.

File Path: P:\San Antonio\Branch\Design\FLOOR PLANS\201706-Jun\Am Assn of Exporters & Importers (xxxxxx)\DWG Files\AAEI\0617.dwg | Tab Name: 11x17L